



**Our Experience
Your Reward**

 **MAUI SAILS®**



Table of contents

- 004 The original ... a Brand with Pedigree
- 005 The History
- 006-007 MauiSails Team
- 008-009 Key Technical Features

- 012 TR-2
- 013 MS-2
- 014 Pursuit
- 015 Aloha
- 016 Technical Features
- 017 Switch
- 018 Global
- 019 Legend
- 020 Inspire
- 021 Rebel

- 022-023 Sail spec/use charts

- 026-027 Masts - Synergy Rig System (SRS)
- 028-031 Carbon booms
- 032 Aluminium booms
- 033 Promotional Gear

Kevin Pritchard ripping the waves off Tahiti using MauiSails Legend.

Kevin Pritchard in Baja, Mexico.

The original ... a Brand with Pedigree

Welcome to the MauiSails collection for 2006. Simplicity, durability, individuality, and performance are the attributes we sought when developing new products for you. Our first year back in business with MauiSails has been exciting, and a challenge for all involved. The immediate success of the TR-1 provided extra motivation to finish the remaining lines of sails by June, which allows us to enter the market with serious impact.

To meet the demanding standards of our Team Riders and development group, we've produced one of the very best sail ranges in the market. The visibility of the sails on the

water is outstanding, and those who have tried our rigs will testify they are the best feeling sail/mast combinations Barry ever designed. With twenty-five years of sail making experience, and continuing leadership in construction details and design philosophy, The Team has produced a unique product for you to sail and enjoy.

In addition to sails, our rig components are even more outstanding, including our proprietary boom front end, plastic parts, and molded one-piece carbon boom. We created a boom the industry would use as a standard. After two years of development and continuous analysis of strengths and

weaknesses, we are confident the MauiSails carbon boom will be the best in the market. Our aluminum booms will use the same front end, with an integrated over-mold to join the arms to the boom head.

MauiSails accessories are simple and functional. To help us to do things right the first time, we have a consolidated accessory range for 2006. We intend to continue to develop it into the future years.

We invite you to join us as we continue to write new chapters in the high performance windsurfing rig story with MauiSails.

Barry Spanier. The legendary sail designer.



The History

The opening chapter of the MauiSails' story begins in the exciting, early days of windsurfing. The 1980's were a time when innovation was everywhere, but true function with high performance was found only on Maui.

The 1978 brainchild of windsurfing pioneer, **Barry Spanier**, MauiSails quickly earned world wide recognition as the leading high performance sail company with functional feature benefits. Spanier's relentless commitment to push the sail design envelope in waves, speed sailing, slalom and course racing enabled him and a devoted following of world class sailors to launch MauiSails to

the top. This tradition of the pursuit of high performance in windsurfing rig technology is alive today, supported by twenty-five years of excellence, and the rebirth of the legend which is MauiSails.

In 1995 Barry teamed up with race veteran and former PBA World champion, **Phil McGain**. Their experience in leading edge windsurfing technology research and development provided **Kevin Pritchard** with the tools to win the Overall World Cup title in 2000 and other Team members to win World Titles in Freestyle and the recent Super X discipline. Kevin has gone on to win five more titles and recognition as one of the world's premier windsurfers today. MauiSails Team has led new developments in all aspects of the sport since 1978, and continues to lead the way today.

Pushing the envelope in all disciplines is the MauiSails tradition, and innovation is the lifeblood of the 2006 collection. True to form, MauiSails is building performance rig products for wave sailing, intermediate wide style free riding, slalom, and course racing. Research and development methods based on decades of multi-disciplined experience produce gear that will reward you with a truly exceptional windsurfing experience every time you hit the water.

It is this passion for a sportive life that drew us all together to do the thing we love most. **MauiSails.... The Team....** the transfer of our energy and experience is creating a windsurfing company you will be proud to be a part of.

Our Experience is Your Reward.

Barry Spanier, Phil McGain, Kevin Pritchard



MauiSails Team

Barry Spanier

The Worlds most decorated sail designer. For the last twenty three years, the name Barry Spanier has been associated with innovation and development in the world of windsurfing and sailing.

Barry has been responsible for more World

Titles with his sail designs than another other person on the planet, including consecutive Professional Windsurfing Association (PWA) overall World titles. Barry continues to evolve MauiSails designs into the 21st century for you to enjoy.

Phil McGain

Born 1963 in Sydney Australia, Phil McGain started sailing at the ripe age of 9 years old. A master Ship and Boatbuilding craftsman, Phil was able to design and build his own racing boards for over 12 years.

Phil has been involved with Research and Development for his entire racing career and in 1989 won the prestigious PBA Racing Title. Phil has competed now for over 20 years as a professional and although racing is his first passion, he has taken charge and blossomed into the business side of the sport.

Kevin Pritchard

PWA World Champion, European Champion and US Champion have all belonged to Pritchard over the past 10 years.

Kevin Pritchard now has 6 World titles under his belt and is still right in the hunt for a couple more. Kevin surpassed the critics with his drive and focus to finally capture the elusive crown in 2000. This is a huge feat as the sport of windsurfing has always been dominated by the likes of Dunkerbeck and Naish.

Kevin's role at MauiSails will be focused on competitions and promotions, as well as assisting in the marketing side of the business.



Taty Frans

Taty Frans

Taty has been windsurfing since he was 12 and is one of the Bonaire Kids who really pushes himself on the water, training hard every day with his brothers. "Bonaire is such a special place for freestyle and free sailing, we are always working on new moves and pushing the equipment to the limits."

He loves to compete in the PWA events and is training hard to be one of the best windsurfers in the World and knows with his new sails nothing will stop him.

Dorota Staszewska

Dorota Staszewska has been the dominating force in womens windsurfing racing for over a decade. Born and raised in Warsaw, Poland, she has taken the level of womens windsurfing to new heights and has been

nearly unbeatable for the past 5 years. Dorota also has been to the Olympics at the age of 16 to represent her country in windsurfing.

Sara Chita Offringa

Introducing the 14 year old sensation Sara Quita Offringa our MauiSails newest team rider from Aruba.

"I always have used Barry's designs and love the feeling of his sails. Taty and Kevin loaned me some sails before the event in Lanzarote in 2005 to try and I loved them. Now I'm on the MauiSails team. At age 14 I'm really happy to be sponsored by such a prestige brand like MauiSails and already I feel the Team support which these guys are famous for."

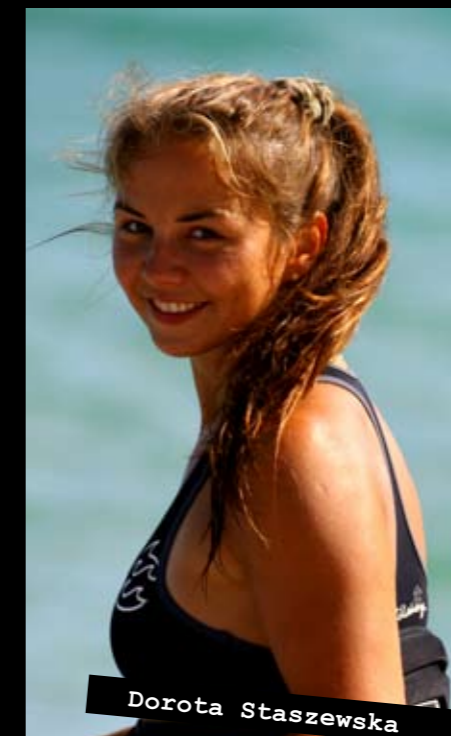
Dennis Littel

Dennis joins the MauiSails team from The Netherlands and to everyone's surprise is one of the standout racers in 2005. Dennis assists in sail testing and is focused on racing events in Europe.



Sarah-Quita Offringa

Coming from a very competitive windsurfing area in Europe, Dennis has completely dominated the racing scene in the Benelux area and will continue to get better as he gains more experience in 2006.



Dorota Staszewska



Dennis Littel

Key
Technical
Features

Unique clew
patch placement.



Head finish sand
seal. Stops sand
from going into
your mast sleeve.



Xply construction
in the upper body
and luff patch.



Unbreakable mini
leech battens.



Low profile batten
tensioners.



Plastic seam
bead protector.



Other common features of MauiSails :

- Custom rubber chafe protector
- Tough and stable mast sleeve material
- Rubber cut out badge to keep the sleeve open for easy mast insertion
- Square sleeve cut-out to maximize boom height
- Tie me up, uphaul slot, tack Handle
- Inside Luff mesh for Batten Key storage
- Easy trim stainless steel 6:1 tack Pulley



Air Chacho by Taty Frans



The TR-2 is the logical evolution of MauiSails' competition race sails. Years of experience and testing produced this thoroughbred, with sometimes only small refinements required to make big gains.

Designed and perfected by Barry Spanier, Phil McGain and Kevin Pritchard with vital feedback from our National racers, the TR-2 has a broad range of use, from slalom and speed racing to formula racing.

Team Race 2 - What's new?

Balanced batten loading (BBL) - This newly developed race sail with alternate batten pockets on each side of the sail starting

at the foot batten on the starboard side and moving up to next batten on the port side, alternating all the way to the top batten. This BBL produces more speed, more balanced rotation and cam pressure equally both on port and starboard tacks.

Shape refinement - We have learned that having a deep, powerful shape in the lower sections, combined with solid resistance to rotation keeps the sail powering in lulls and develops acceleration. The TR-2 has evolved shaping that is rounding the entry curves in a way that forces the depth forward creates better cam rotation and stops the draft from moving back in that full part of the sail.

Easy rigging - To facilitate rigging of the larger sails with the cams off method, we have added zipper slots and attached the cams to the sail. Now you can rig comfortably without

having to crease the sail and ease pushing the cam onto the mast.

Better construction - We added more material structure to the tack and head finish that gives the sail a stronger and smoother finish.

New Batten Tensioner - Metal screw fitting and more refined batten tensioner ensure easy and faultless adjustment of the battens.

TR-2's unique Character

- Perfection and smooth sailing.
- Bottom end glide.
- Top end control and effortless acceleration
- Racing winning performance.

Recommended Boards

Slalom and Freeride: 90 -130 litres
Race and Formula: 110-160 litres

MS-2 is the freerace alternative for flat water speed with the feel of a race sail in a simple, light weight, and less expensive configuration. With the larger sizes optimized for Formula Experience rules, and the smaller ones ideally suited to solid slalom type performance, these two cam models will deliver excellent performance value and durability.

we went for a soft feel while still retaining the balance and control. Gentle rotation of the cams will help you jibe with ease, and once you are sheeted in there's an instant feeling of the soft power in this fine tuned sail.

Recommended Boards

Freeride boards - 90-150 L
Race boards - 90-160 L

Going fast with power and an easy ride is what you can expect from the MS-2. To achieve this,

Sail specification

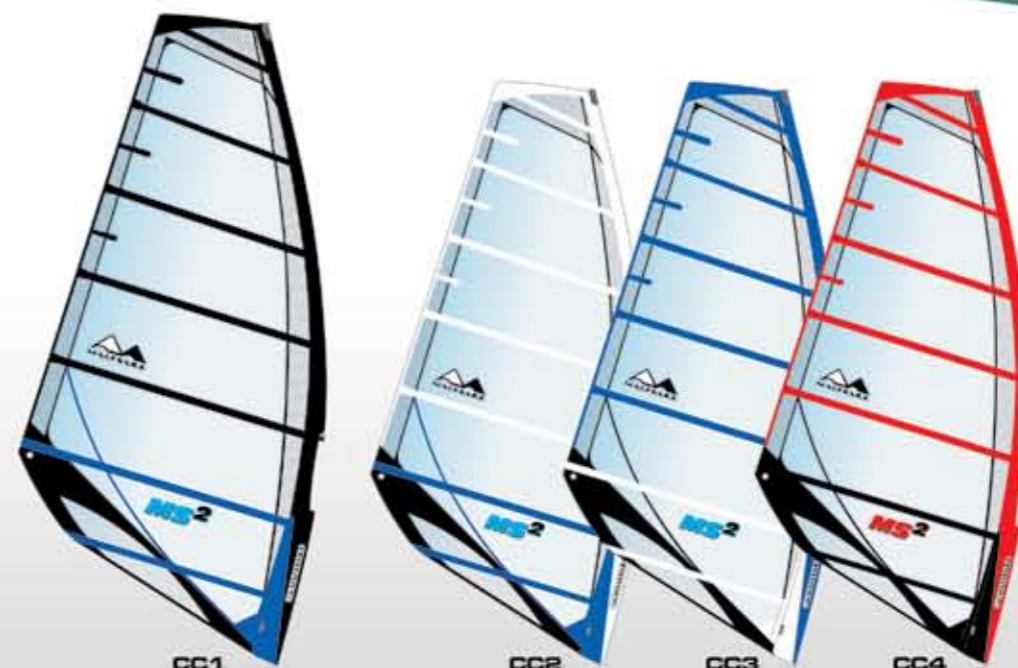
SIZE [m ²]	MAST [cm]	IMCS	LUFF [cm]	BOOM [cm]	BASE [cm]	HEAD/TOP	BATTENS	CAM	WEIGHT [kg]
6,0	430	21	438	196	8	fixed	7	2	4,5
6,5	430	21	456	201	26	fixed	7	2	4,6
7,0	460	25	470	212	10	fixed	7	2	4,7
7,5	460	25	484	221	24	fixed	7	2	5,0
8,0	490	29	496	230	6	fixed	7	2	5,1
8,5	490	29	512	239	22	fixed	7	2	5,3
9,0	520	32	528	244	8	fixed	7	2	5,5
9,5	520	32	538	251	18	fixed	7	2	5,7
10,0	520	32	546	258	26	fixed	7	2	5,9
11,0	520	32	554	272	34	fixed	7	2	6,2

Sail specification

SIZE [m ²]	MAST [cm]	IMCS	LUFF [cm]	BOOM [cm]	BASE [cm]	HEAD/TOP	BATTENS	CAM	WEIGHT [kg]
4,3	370	17	380	157	10	fixed	8	4	4,2
4,7	370	17	390	167	20	fixed	8	4	4,5
5,1	400	19	408	179	8	fixed	9	4	5,0
5,5	400	19	420	189	20	fixed	9	4	5,1
5,9	430	21	440	193	10	fixed	9	4	5,2
6,3	430	21	450	202	20	fixed	9	4	5,3
6,6	460	25	464	208	4	fixed	9	4	5,6
7,0	460	25	472	219	12	fixed	9	4	5,7
7,6	460	25	482	228	22	fixed	9	4	6,0
8,0	490	29	496	236	6	fixed	9	4	6,3
8,5	490	29	506	241	16	fixed	9	4	6,6
9,0	490	29	520	250	30	fixed	9	4	6,7
9,5	520	32	526	259	6	fixed	9	4	7,0
10,0	520	32	538	268	18	fixed	9	4	7,2
10,5	520	32	549	276	29	fixed	9	5	7,5
11,0	550	37	566	279	16	fixed	9	5	7,7
11,5	550	37	574	285	24	fixed	9	5	7,8
12,0	550	37	585	294	35	fixed	9	5	8,2



Race Slalom Freerace



CC1 CC2 CC3 CC4
Race Slalom Freerace Freeride



PURSUIT

Pursue
the Extraordinary

MauiSails wants to help you get the most out of your sailing experience with the introduction of a refined, lightweight new design called the Pursuit. We know you are looking for the kind of performance and handling that will be easy to find in this efficient RAF freeride sail built around the MauiSails SRS carbon 55% and 30% masts. Higher internal skin tension relieves the mid leech sections and promotes more even twist. This highly developed shaping technique makes an even-tempered handling character without loss of power or control, and it produces a desirable soft feel. The light feel and easy power found in the

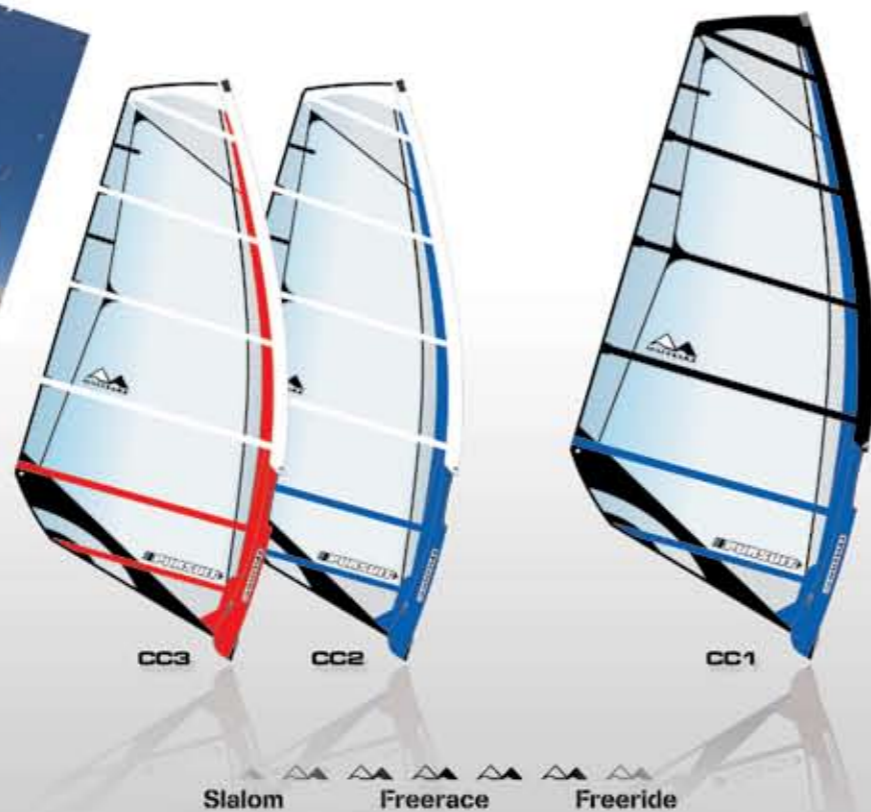
Pursuit for 2006 should satisfy any sailor looking for a slalom to bump and jump oriented RAF.

Recommended Boards

Freeride boards - 90-150 L
Slalom boards - 90-120 L

Sail specification

SIZE [m ²]	MAST [cm]	IMCS	LUFF [cm]	BOOM [cm]	BASE [cm]	HEAD/TOP	BATTENS	CAM	WEIGHT [kg]
5,5	430	21	440	176	10	fixed	6	0	3,6
6,0	430	21	456	187	26	fixed	6	0	3,8
6,5	460	25	468	197	8	fixed	6	0	4,0
7,0	460	25	476	208	16	fixed	6	0	4,2
7,5	460	25	484	218	24	fixed	6	0	4,4
8,0	490	29	498	229	8	fixed	6	0	4,6
8,5	490	29	516	234	26	fixed	6	0	4,8



Aloha is a special greeting and the name of MauiSails most accessible new free ride rig.

With the same specialized details found in all MauiSails 2006 products, the Aloha delivers value and performance for a wide range of boards.

Four battens in the smaller sizes make a rig that is super easy to handle, with a lightweight efficient feel. The larger five batten Aloha is perfect for widestyle freeride boards, to make

windsurfing more accessible to the largest audience.

The carefully tuned balance of power and positive handling makes the Aloha the ideal sail for the first time short boarder.

Recommended Boards

Freeride boards - 90-150 L
Beginner boards - 100-150 L

Sail specification

SIZE [m ²]	MAST [cm]	IMCS	LUFF [cm]	BOOM [cm]	BASE [cm]	HEAD/TOP	BATTENS	CAM	WEIGHT [kg]
4,5	430	21	416	161	4	vario	4	0	2,9
5,0	430	21	428	170	4	vario	4	0	3,3
5,5	430	21	442	178	12	fixed	4	0	3,4
6,0	430	21	456	191	26	fixed	5	0	3,7
6,5	460	25	468	202	8	fixed	5	0	3,8
7,0	460	25	480	207	20	fixed	5	0	4,0
7,5	460	25	488	218	28	fixed	5	0	4,2



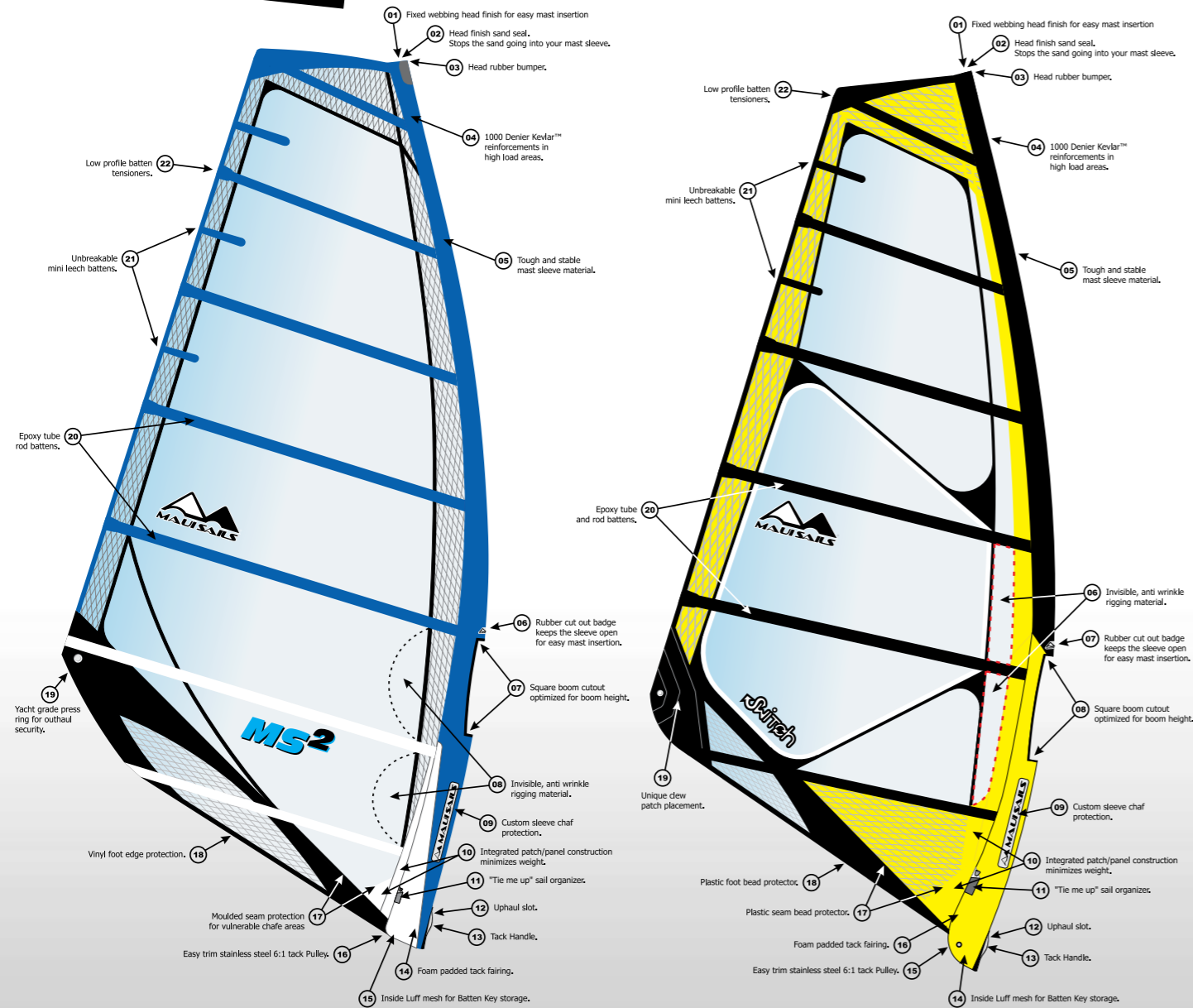
Aloha

ALOHA
the spirit of HAWAII



Technical features

Here you can find most common technical features for CAM and RAF sails of MauiSails.



The 2006 MauiSails Switch is destined to become the sail of choice for the widest range of windsurfing experiences. It will excel in the new competition format of Super-X but still satisfy your every need as a modern day freeride sail. It has the character to excite any sailor interested in flat out speed, with loops, duck jibes, and chop hopping all still possible in the mix.

the powerful low end. This is ideal for being the best all round sail for everything except pounding waves. Materials are chosen for maximum stability and durability as necessary. A bold graphic, and rugged edge ply's guarantee the best combination of weight and strength with no compromise in performance.

Recommended Boards

Wave/freestyle boards - 75 -110 L
Freeride/slalom boards - 90-130 L

The Switch has dominant speed in the lightest winds. Combining the tube/rod batten configuration through the middle of the sail with the high skin tension makes the handling super soft without giving up any of

Sail specification

SIZE [m ²]	MAST [cm]	IMCS	LUFF [cm]	BOOM [cm]	BASE [cm]	HEAD/TOP	BATTENS	CAM	WEIGHT [kg]
4,8	430	21	420	166	4	vario	5	0	3,7
5,2	430	21	430	174	4	vario	5	0	3,8
5,6	430	21	438	181	8	fixed	6	0	3,9
6,0	430	21	450	193	20	fixed	6	0	4,1
6,4	460	25	464	202	4	fixed	6	0	4,3
7,0	460	25	476	212	16	fixed	6	0	4,5



Switch

SWITCH on your TOTAL WINDSURFING performance





Go GLOBAL

This lightweight wave sail has loads of power and will never give you a hard time. Perfectly suited to the widest variety of situations, its deeper, more powerful shape and wave outline make it ideal for onshore winds and early planing. The durable construction and solid materials make it ideal for hard use and a long life; a life of sweet moments on the water, with easy handling and performance.

By carefully matching the deeper shape with slightly more powerful luff curves, and emphasis on soft, graduated twist, we have

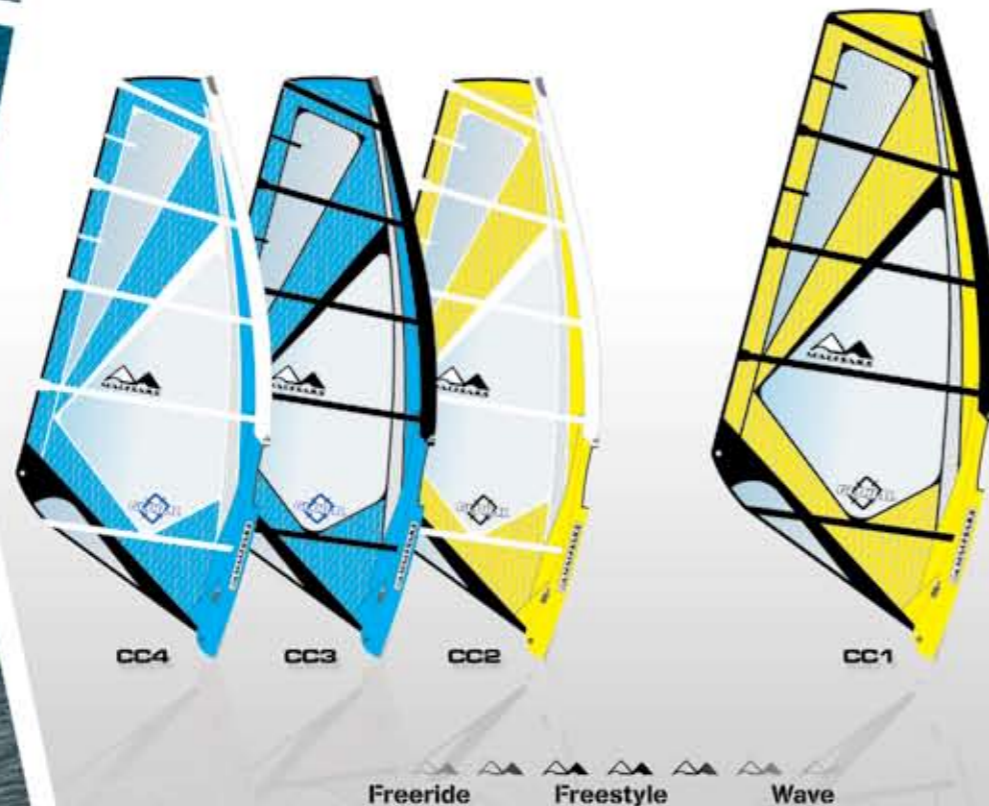
created a rig that is designed to get you going in gusty conditions and to remain comfortably in control when overpowered. So if you like to get on the road, and sample the sailing in a lot of different places, be sure and have the Global wave in your quiver bag.

Recommended Boards

Wave/freestyle boards - 60-95 L
Freeride boards - 90-115 L

Sail specification

SIZE [m ²]	MAST [cm]	IMCS	LUFF [cm]	BOOM [cm]	BASE [cm]	HEAD/TOP	BATTENS	CAM	WEIGHT [kg]
4,0	370	17	384	153	14	vario	5	0	3,0
4,2	370	17	394	155	24	vario	5	0	3,1
4,5	400	19	404	163	4	fixed	5	0	3,2
4,7	400	19	406	168	6	fixed	5	0	3,3
5,0	400	19	418	175	18	fixed	5	0	3,4
5,4	400	19	430	180	30	fixed	5	0	3,5
5,8	430	21	448	186	18	fixed	5	0	3,7
6,2	430	21	454	193	24	fixed	5	0	3,8



The Legend is the latest in a long line of design developments from The TEAM and MauiSails group. Driven by the demands of World Champions, and the desire to always be the best, these new side shore wave sails will amaze you with their soft feel, crisp reaction, and engineered durability. Built upon a twenty-five year evolution, and the experience of working with all the biggest names in the sport, the Legend will live on when you try one.

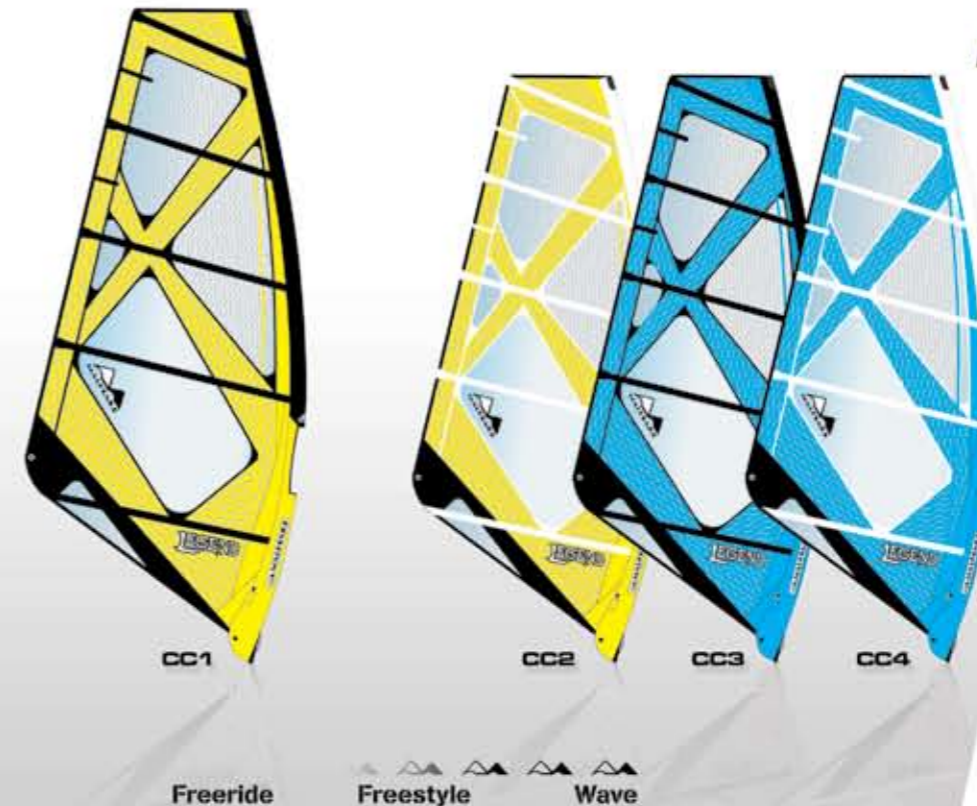
Large wheel stainless steel tack pullies, balanced load tension system for battens, clever abrasion protection, and careful consideration of the smallest details, all make the Legend a must for anyone who strives to be the best they can. Don't limit your possibilities with anything less.

Recommended Boards

Wave/Freestyle Boards - 60 - 95 L
Wave/Freeride Boards - 90 - 110 L

Sail specification

SIZE [m ²]	MAST [cm]	IMCS	LUFF [cm]	BOOM [cm]	BASE [cm]	HEAD/TOP	BATTENS	CAM	WEIGHT [kg]
3,3	370	17	362	140	4	vario	5	0	2,9
3,7	370	17	365	144	4	vario	5	0	3,1
4,0	370	17	390	150	20	vario	5	0	3,2
4,2	370	17	398	154	28	vario	5	0	3,3
4,5	400	19	404	163	4	fixed	5	0	3,4
4,7	400	19	410	164	10	fixed	5	0	3,4
5,0	400	19	418	173	18	fixed	5	0	3,5
5,3	400	19	430	178	30	fixed	5	0	3,6
5,7	430	21	446	184	16	fixed	5	0	3,8



The LEGEND Lives On





What does it take to learn to windsurf?
INSPIRATION

That's why we have the Inspire, a totally dedicated school and resort sail conceived to help the student and practitioner feel how a real beginner sail works. Outline balance is geared to enable proper turning maneuvers even with larger, heavy learning equipment. The entire range is available in two styles: super durable woven polyester with PVC windows, and an X-ply™ version for those who need or desire that because of import restrictions or performance perspective.

Inspire's Unique character

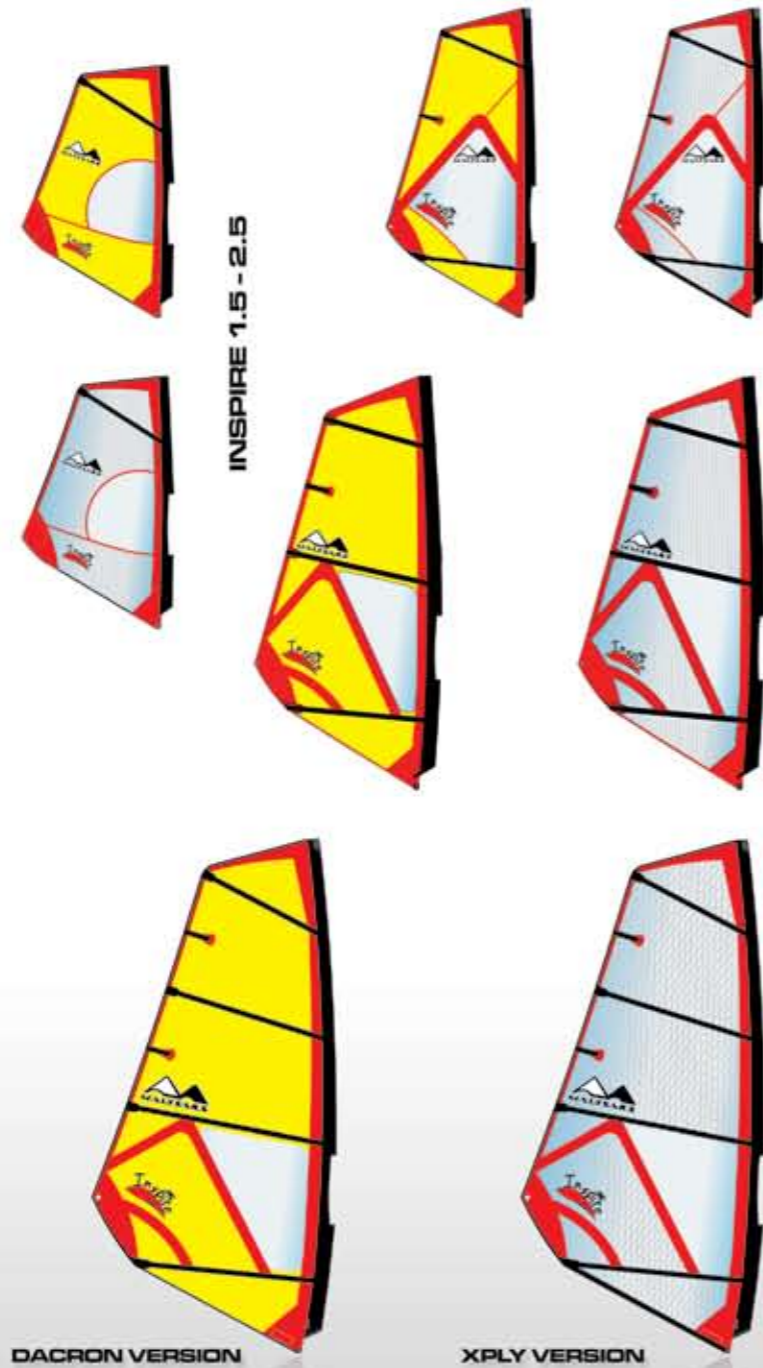
- Effortless rigging.
- Super easy to uphaul.
- Soft feeling.
- A beginner's dream.

Recommended Boards

- Freeride boards- 110-160 L
- Beginner boards- 130-160 L

Sail specification

SIZE [m]	LUFF [cm]	BOOM [cm]	BATTENS	CAM
1,5	200	125	1	0
2,0	230	127	1	0
2,5	250	139	1	0
3,0	300	143	2	0
3,5	340	151	3	0
4,0	370	161	4	0
4,5	390	168	4	0
5,0	403	181	4	0
5,5	415	193	4	0



DACRON VERSION

XPLY VERSION

INSPIRE 3.0

INSPIRE 3.5

INSPIRE 4.0 - 5.5

We have designed the Rebel just for them. For kids between forty and ninety pounds (18-40kg) our Rebel 310 mast fits perfect with the sails that those little people need for regular performance windsurfing. The wave style outlines and rugged materials will make any aspiring young windsurfer sail like their parents.

Rebel's Unique character

- Light weight.
- Good rig tension
- Easy to rig.
- The Real small sail.

Recommended Boards

- Beginner boards: 90-140 L
- Wave boards: 65-95 L

Sail specification

SIZE [m]	LUFF [cm]	BOOM [cm]	BATTENS	CAM
2,2	285	120	4	0
2,7	304	126	4	0
3,0	325	137	4	0
3,5	350	143	4	0
4,0	370	151	4	0



REBEL

For a younger and smaller



TR2

SIZE [m]	MAST [cm]	IMCS	LUFF [cm]	BOOM [cm]	BASE [cm]	HEAD/TOP	BATTENS	CAM	WEIGHT [kg]
4,3	370	17	380	157	10	fixed	8	4	4,2
4,7	370	17	390	167	20	fixed	8	4	4,5
5,1	400	19	408	179	8	fixed	9	4	5,0
5,5	400	19	420	189	20	fixed	9	4	5,1
5,9	430	21	440	193	10	fixed	9	4	5,2
6,3	430	21	450	202	20	fixed	9	4	5,3
6,6	460	25	464	208	4	fixed	9	4	5,6
7,0	460	25	472	219	12	fixed	9	4	5,7
7,6	460	25	482	228	22	fixed	9	4	6,0
8,0	490	29	496	236	6	fixed	9	4	6,3
8,5	490	29	506	241	16	fixed	9	4	6,6
9,0	490	29	520	250	30	fixed	9	4	6,7
9,5	520	32	526	259	6	fixed	9	4	7,0
10,0	520	32	538	268	18	fixed	9	4	7,2
10,5	520	32	549	276	29	fixed	9	5	7,5
11,0	550	37	566	279	16	fixed	9	5	7,7
11,5	550	37	574	285	24	fixed	9	5	7,8
12,0	550	37	585	294	35	fixed	9	5	8,2

Aloha

SIZE [m]	MAST [cm]	IMCS	LUFF [cm]	BOOM [cm]	BASE [cm]	HEAD/TOP	BATTENS	CAM	WEIGHT [kg]
4,5	430	21	416	161	4	vario	4	0	2,9
5,0	430	21	428	170	4	vario	4	0	3,3
5,5	430	21	442	178	12	fixed	4	0	3,4
6,0	430	21	456	191	26	fixed	5	0	3,7
6,5	460	25	468	202	8	fixed	5	0	3,8
7,0	460	25	480	207	20	fixed	5	0	4,0
7,5	460	25	488	218	28	fixed	5	0	4,2

Switch

SIZE [m]	MAST [cm]	IMCS	LUFF [cm]	BOOM [cm]	BASE [cm]	HEAD/TOP	BATTENS	CAM	WEIGHT [kg]
4,8	430	21	420	166	4	vario	5	0	3,7
5,2	430	21	430	174	4	vario	5	0	3,8
5,6	430	21	438	181	8	fixed	6	0	3,9
6,0	430	21	450	193	20	fixed	6	0	4,1
6,4	460	25	464	202	4	fixed	6	0	4,3
7,0	460	25	476	212	16	fixed	6	0	4,5

GLOBAL

SIZE [m]	MAST [cm]	IMCS	LUFF [cm]	BOOM [cm]	BASE [cm]	HEAD/TOP	BATTENS	CAM	WEIGHT [kg]
4,0	370	17	384	153	14	vario	5	0	3,0
4,2	370	17	394	155	24	vario	5	0	3,1
4,5	400	19	404	163	4	fixed	5	0	3,2
4,7	400	19	406	168	6	fixed	5	0	3,3
5,0	400	19	418	175	18	fixed	5	0	3,4
5,4	400	19	430	180	30	fixed	5	0	3,5
5,8	430	21	448	186	18	fixed	5	0	3,7
6,2	430	21	454	193	24	fixed	5	0	3,8

LEGEND

SIZE [m]	MAST [cm]	IMCS	LUFF [cm]	BOOM [cm]	BASE [cm]	HEAD/TOP	BATTENS	CAM	WEIGHT [kg]
3,3	370	17	362	140	4	vario	5	0	2,9
3,7	370	17	365	144	4	vario	5	0	3,1
4,0	370	17	390	150	20	vario	5	0	3,2
4,2	370	17	398	154	28	vario	5	0	3,3
4,5	400	19	404	163	4	fixed	5	0	3,4
4,7	400	19	410	164	10	fixed	5	0	3,4
5,0	400	19	418	173	18	fixed	5	0	3,5
5,3	400	19	430	178	30	fixed	5	0	3,6
5,7	430	21	446	184	16	fixed	5	0	3,8

Inspire

SIZE [m]	LUFF [cm]	BOOM [cm]	BATTENS	CAM
1,5	200	125	1	0
2,0	230	127	1	0
2,5	250	139	1	0
3,0	300	143	2	0
3,5	340	151	3	0
4,0	370	161	4	0
4,5	390	168	4	0
5,0	403	181	4	0
5,5	415	193	4	0

REBEL

SIZE [m]	LUFF [cm]	BOOM [cm]	BATTENS	CAM
2,2	285	120	4	0
2,7	304	126	4	0
3,0	325	137	4	0
3,5	350	143	4	0
4,0	370	151	4	0

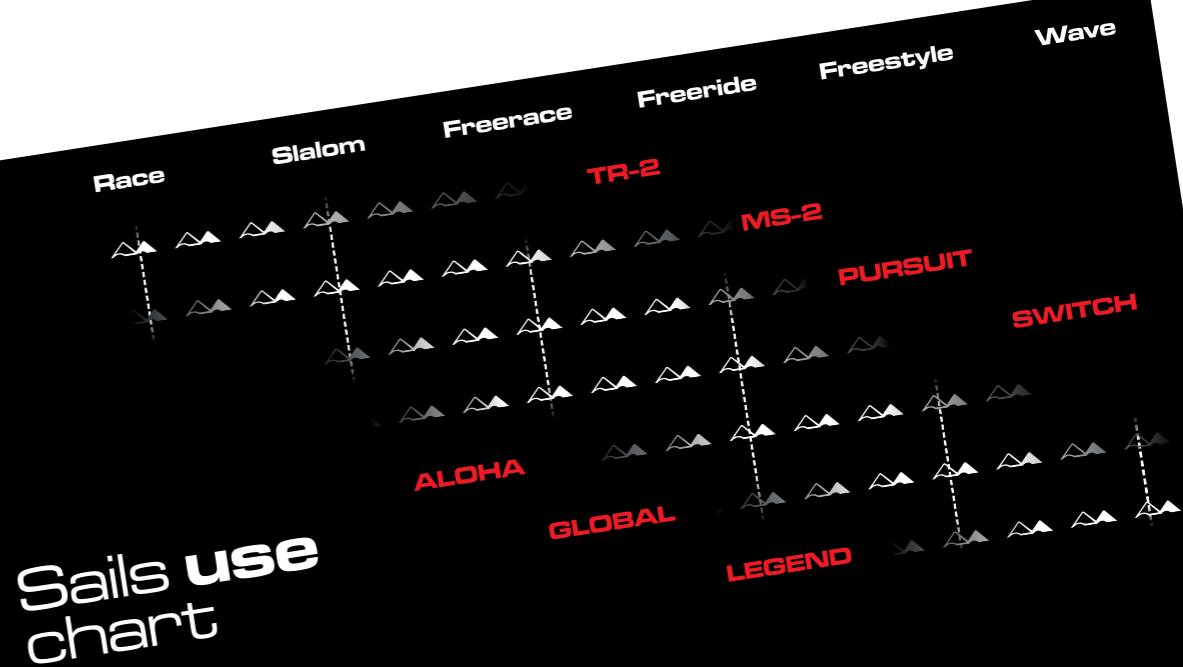
MS2

SIZE [m]	MAST [cm]	IMCS	LUFF [cm]	BOOM [cm]	BASE [cm]	HEAD/TOP	BATTENS	CAM	WEIGHT [kg]
6,0	430	21	438	196	8	fixed	7	2	4,5
6,5	430	21	456	201	26	fixed	7	2	4,6
7,0	460	25	470	212	10	fixed	7	2	4,7
7,5	460	25	484	221	24	fixed	7	2	5,0
8,0	490	29	496	230	6	fixed	7	2	5,1
8,5	490	29	512	239	22	fixed	7	2	5,3
9,0	520	32	528	244	8	fixed	7	2	5,5
9,5	520	32	538	251	18	fixed	7	2	5,7
10,0	520	32	546	258	26	fixed	7	2	5,9
11,0	520	32	554	272	34	fixed	7	2	6,2

PURSUIT

SIZE [m]	MAST [cm]	IMCS	LUFF [cm]	BOOM [cm]	BASE [cm]	HEAD/TOP	BATTENS	CAM	WEIGHT [kg]
5,5	430	21	440	176	10	fixed	6	0	3,6
6,0	430	21	456	187	26	fixed	6	0	3,8
6,5	460	25	468	197	8	fixed	6	0	4,0
7,0	460	25	476	208	16	fixed	6	0	4,2
7,5	460	25	484	218	24	fixed	6	0	4,4
8,0	490	29	498	229	8	fixed	6	0	4,6
8,5	490	29	516	234	26	fixed	6	0	4,8

Sails spec chart





Kevin Pritchard ripping the waves of Baja/Mexico

MauiSails Masts

Synergy Rig System

The MauiSails SRS masts are the core of your rig. MauiSails SRS constant curve masts produce energy like a coiled spring. It flexes consistently, and reacts as fast as possible. This promotes even tension along the entire leech edge, and develops even pressure over the entire rig. The reward is the release of stored energy as you accelerate. By design, the relationship of sail and mast is guaranteed when both are imagined as one.

By integrating the ferrule structure into the lay-up of the lower section of the mast, and by building on specialized two-piece mandrels using high modulus prepreg carbon, we are able to favorably influence the weight/strength ratio. Controlled high temperature curing guarantees maximum durability.

Use of the proper mast (Rig Synergy) produces a steady, light, feeling rig that comes from having the foil at the correct angle of attack, regardless of the changing pressure on the rig. You feel the entire leech, and have the impression the sail is easily slipping through the air mass, scooping as much power as you can handle, and all in perfect balance.



SRS Carbon 30

This is the mast for all entry level sailors who want a super durable mast at a bargain price. The carbon 30 is well suited to the Aloha and Pursuit, but will fit into all other MauiSails.

SIZE [cm]	IMCS	CARBON [%]	WEIGHT [kg]
370	17	30%	2.00
400	19	30%	2.10
430	21	30%	2.20
460	25	30%	2.35
490	29	30%	2.50

SRS Carbon 55

Intermediate to advanced sailors who want high performance at an affordable price designed to match all MauiSails freeride type sails through a broad spectrum of conditions. Pursuit, Aloha and Switch are designed for the SRS Carbon 55.

SIZE [cm]	IMCS	CARBON [%]	WEIGHT [kg]
400	19	55%	1.85
430	21	55%	2.10
460	25	55%	2.25
490	29	55%	2.40

SRS Carbon 75

Formula Racers and advanced sailors who want a high performance to price mast designed to match top MauiSail ranges. TR-1, MS2 and Switch will all perform well on the SRS Carbon 75.

SIZE [cm]	IMCS	CARBON [%]	WEIGHT [kg]
400	19	75%	1.65
430	21	75%	1.80
460	25	75%	2.00
490	29	75%	2.25
520	32	75%	2.40

SRS Wave 75 RDM

Hard Core wave sailors and advanced freeride sailors who want light weight and the quickest gust response in a reduced diameter (RDM) wave mast designed to match all MauiSails. Switch, Global, Legend and Aloha will all fit and perform well on the SRS Wave 75 RDM.

SIZE [cm]	IMCS	CARBON [%]	WEIGHT [kg]
370	17	75%	1.50
400	19	75%	1.75
430	21	75%	2.00
460	25	75%	2.25

SRS Wave 100 RDM

The SRS Wave 100 RDM is for those who demand the ultimate in performance, durability and responsiveness in high performance radical conditions. Light weight and constant curve, this RDM will turn on any sail to a new level. Global and Legend are designed to perform to their max on the SRS Wave 100 RDM.

SIZE [cm]	IMCS	CARBON [%]	WEIGHT [kg]
400	19	100%	1.50
430	21	100%	1.80
460	25	100%	2.00

SRS Race 100

Formula Racers and advanced sailors who want the lightest and quickest gust response mast. The SRS Race 100 is for those who demand the absolute best in performance and sensation. TR-1 and MS2 are used on the SRS Race 100 to get maximum performance in all conditions.

SIZE [cm]	IMCS	CARBON [%]	WEIGHT [kg]
430	21	100%	1.40
460	25	100%	1.55
490	29	100%	1.85
520	32	100%	2.15
550	36	100%	2.35



MauiSails
Carbon
Booms



MauiSails SRS Carbon booms.

We have aimed to create the highest standard for carbon booms in the windsurfing industry. By using pre-preg carbon fiber in heat treated press moulds, we get the best stiffness to weight ratio possible. Plus maximum durability is assured through the use of functional dimensioning and properly scaled add-on parts, like the boom head and tail hardware.

All MauiSails booms have the rugged and easy to use front end that fits perfectly with the 40mm diameter continuous boom arm. The extra wide race tail extension has pullies and fairleads for adjustable outhauls. Each boom is fully developed and tested for it's own purpose, from the SRS Carbon Race 265 for sails to 12.5m, to the SRS Carbon Wave 140, with its own custom tailpiece, and 30mm grip zone for super comfort and control.



Minimum usable length	140 cm
Maximum usable length	200 cm
Extension range	60 cm
Maximum width with grip foam	45,5 cm
Grip area outside diameter with foam	30 mm
Outside diameter at frontend	40 mm
Width at backend	10 mm
Back end fitting	Wave loop n' go
Sail sizes to fit	3.3 - 5.3

Carbon Wave 140

Features

- Reduced diameter
- Mauisails frontend
- Loop and go backend
- Monocoque boom body
- Monocoque backend arm
- Twin pin lock system
- 60cm of adjustment
- Highest Stiffness to Weight
- Maximum performance

Minimum usable length	170 cm
Maximum usable length	230 cm
Extension range	60 cm
Maximum width with grip foam	50 cm
Grip area outside diameter with foam	30 mm
Outside diameter at frontend	40 mm
Width at backend	10 mm
Back end fitting	Wave loop n' go
Sail sizes to fit	5.0 - 7.4

Carbon Wave 170

Features

- Reduced diameter
- Mauisails frontend
- Loop and go backend
- Monocoque boom body
- Monocoque backend arm
- Twin pin lock system
- 60cm of adjustment
- Highest Stiffness to Weight
- Maximum performance

Minimum usable length	190 cm
Maximum usable length	240 cm
Extension range	50 cm
Maximum width with grip foam	55 cm
Grip area outside diameter with foam	32,5 mm
Outside diameter at frontend	40 mm
Width at backend	20 mm
Back end fitting	3 pulley with cleat
Sail sizes to fit	5.5 - 8.5

Carbon Race 190

Features

- 40mm arms at the back
- Mauisails frontend
- Adjustable outhaul cleat
- Monocoque boom body
- Monocoque backend arm
- Twin pin lock system
- 50cm of adjustment
- Highest Stiffness to Weight
- Maximum performance

Minimum usable length	230 cm
Maximum usable length	290 cm
Extension range	60 cm
Maximum width with grip foam	68 cm
Grip area outside diameter with foam	32,5 mm
Outside diameter at frontend	40 mm
Width at backend	30 mm
Back end fitting	Wide race triple pulley
Sail sizes to fit	8.5 - 11.0

Carbon Race 230

Features

- 40mm arms at the back
- Mauisails frontend
- Adjustable outhaul cleat
- Monocoque boom body
- Monocoque backend arm
- Twin pin lock system
- 60cm of adjustment
- Anti chafe protectors
- Highest Stiffness to Weight
- Maximum performance

Kevin Pritchard jibing on Fuerteventura



Minimum usable length	265 cm
Maximum usable length	310 cm
Extension range	45 cm
Maximum width with grip foam	68 cm
Grip area outside diameter with foam	32,5 mm
Outside diameter at frontend	40 mm
Width at backend	30 mm
Back end fitting	Wide race triple pulley
Sail sizes to fit	9.5 - 12.0

Carbon Race 265

Features

- 40mm arms at the back
- Mauisails frontend
- Adjustable outhaul cleat
- Monocoque boom body
- Monocoque backend arm
- Twin pin lock system
- Anti chafe protectors
- Highest Stiffness to Weight
- Maximum performance

MauiSails Alu Booms

Aluminum booms.

The MauiSails Aluminum Boom range delivers true high performance windsurfing rig technology. Fitted with the new MauiSails Frontend, this new T8 heat treated Aluminum Boom is super stiff and durable. The arms fit inside the aluminum tube frontend instead of on the outside like most other aluminum booms to return the highest level of durability and stiffness.

Each boom curve is individually designed to match the specific sail size range perfectly. 50cm range of adjustments on rear ends with a double pin lock system delivers supreme stiffness and long term durability.

Performance Alu Boom Range	Size Range [cm]
Alu Boom Race 230	230 - 280
Alu Boom Freerace 200	200 - 250
Alu Boom Slalom 180	180 - 230
Alu Boom Wave 160	160 - 210
Alu Boom Wave 140	140 - 190
Alu Boom Inspire 150	150 - 190
Alu Boom Rebel 120	120 - 150



MauiSails Promotional Gear

MauiSails is offering a limited range of promotional gear. We have caps, T shirts and sailing hats available for your purchase, either direct or through the website at the MauiSails store.



Kevin Pritchard presenting MauiSails T-Shirts



Taty Frans spocking on Maui

Need More Information? Get online at WWW.MAUISAILS.COM
Join our Forum - Ask Barry Spanier

Get Your **Reward**
Get **MauiSails**

Check it with your local dealer

